



# STUDY ENGLISH IN LONDON (Tti) LEADING THE CHANGE

# CONTENTS

<b>Why choose TopUp Learning London (Tti)</b>	<b>03</b>
<b>TopUp Learning London (Tti) Since 1998</b>	<b>04</b>
<b>Student Welfare</b>	<b>05</b>
<b>Chart Your Progress</b>	<b>06</b>
<b>Courses in London</b>	<b>07</b>
<b>Weekly Timetable</b>	<b>08</b>
<b>General English and 30+ Adult English</b>	<b>09</b>
<b>IELTS and Cambridge Exam Preparation</b>	<b>10</b>
<b>VIP English, 30+ VIP English and One to One Lessons</b>	<b>12</b>
<b>English Plus Modules</b>	<b>13</b>
<b>Social Programme</b>	<b>14</b>
<b>Christmas and New Year Course</b>	<b>15</b>
<b>Four Season Explorer (Bespoke Group)</b>	<b>16</b>
<b>Your London Guide</b>	<b>17</b>
<b>Where To Stay In London</b>	<b>18</b>



## CORONAVIRUS SAFETY

We have full measures in place for your safety and these are always up-to-date with the latest government guidance. We have the 'Good to Go' Visit England accreditation for Covid-19 safety measures. Find out more at: [www.ttischool.com/faq/#faqs](http://www.ttischool.com/faq/#faqs)





We are an independent boutique school, not part of a chain



Excellent nationality mix



TopUp Learning (Tti) is very close to center of London - 10 mins to Oxford Circus by tube



Camden is an interesting, creative and vibrant location



Our school was listed by EL Gazette as a top value 'London Village' school



We have a very good choice of accommodation, some within walking distance



Since the school was established in 1998 over 30,000 students have chosen to study with us



Students have described Tti as their 'Home from Home'



We are accredited by the British Council and a member of English UK



You will study with enthusiastic qualified teachers who love to teach



The timetable is flexible with option classes available and some free workshops



Regular one-to-one progress tutorial with your teacher



Online learning option is available



You can use our self-study facilities with free wifi and access to books



Your E-learning access continues after you finish your course



Our teachers are involved in our weekly Social Programme



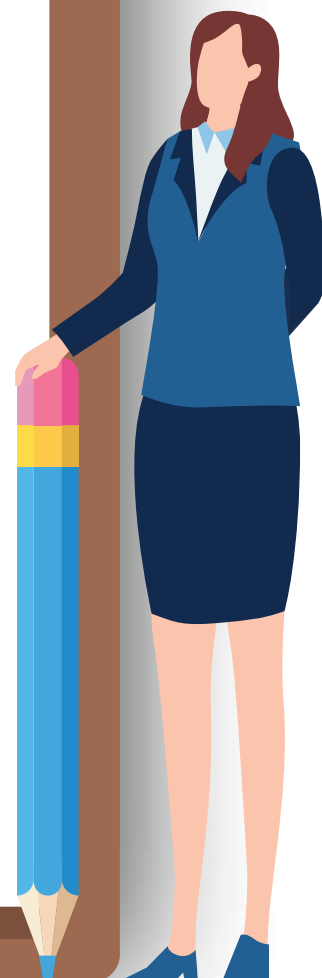
We provide free tea and coffee all day for you to relax with your classmates.



**We know you'll love your time here!**



Accredited by the  
**BRITISH COUNCIL**  
for the teaching  
of English in the UK





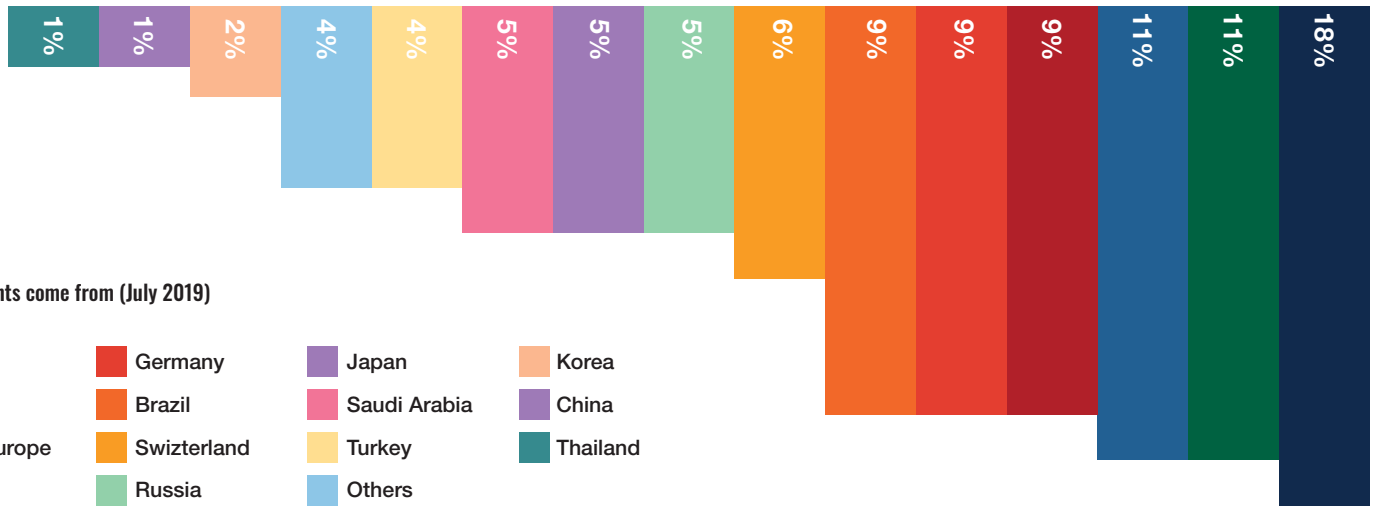
# TOPUP LEARNING LONDON (Tti) SINCE 1998



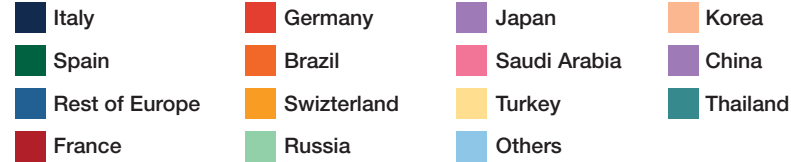
## MEET THE PRINCIPAL Dr. Sam Malafeh

At TopUp Learning London (Tti) you will find the warmest welcome and a safe, comfortable learning environment. The TopUp Learning London (Tti) team look forward to meeting you soon!





Where our students come from (July 2019)



Our dedicated support staff are here to help if you have any personal or emotional problems during your stay, or if you just need someone to talk to. They can give support and confidential advice for a range of welfare issues.

Our support staff can be contacted by phone or email, and the school has a 24-hour emergency phone. Students receive this contact information in the student handbook.

## SAFEGUARDING STATEMENT

TopUp Learning London (Tti) is committed to safeguarding and promoting the welfare of everyone, in particular those aged 16-17 years old. We are fully committed to ensuring that consistent effective safeguarding procedures are in place both on and off-site to support everyone (including but not limited to staff, students, host families and group leaders) at the school. All staff share this commitment and behave accordingly.

## STUDENTS AGED 16 AND 17

While the majority of our students are 18 and older, we welcome students aged 16 and above. It should, however, be noted that we cannot provide 24 hour supervision. If they are not staying with a relative or family friend, 16 and 17 year olds will be required to stay in half-board homestay accommodation.

We ask that parents or guardians of students aged 16 and 17 read our Notes for Parents and Guardian of students aged under 18 before booking their child to study here. This will help you understand what to expect when your child comes to study with us.

## ADVICE FOR 16 AND 17 YEAR OLDS

We have a Code of Conduct for all our students which gives advice and support about studying with us and staying in the UK. Students will be given this on their first day. Download the Code of Conduct at [www.ttischool.com/student-welfare](http://www.ttischool.com/student-welfare) for more information.

## TRAVEL FOR 16 AND 17 YEAR OLDS STUDYING IN THE UK

Students aged 16 or 17 coming to the UK will need to have a completed Letter of Consent to Travel. Please download it from [www.ttischool.com/student-welfare](http://www.ttischool.com/student-welfare) or request via email from us.

## CONSENT FORM FOR 16 AND 17 YEAR OLDS

The parents/guardians of students aged 16 or 17 studying at Tti School of English are asked to complete a Parental Agreement Letter for their child. This includes curfew times and we ask you to keep within our guidelines when deciding these. This form must be sent at the time of booking, and a sample version is available to download here. Please note – we cannot issue enrolment documents until we have received this form.



# CHART YOUR PROGRESS

**At TopUp Learning London (Tti), we have a clear, student-centred and supportive process for improving your English language level.**

# 1

## ARRIVAL DAY

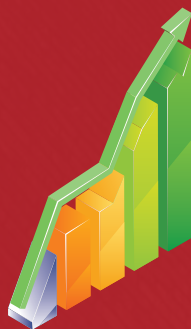
On arrival day, you will have a one-to-one interview with a teacher to further assess and clarify your English level. You'll also be given course materials to help guide you through your learning. At TopUp Learning London (Tti), you will always be placed in a class with people of a similar language level to you.



# 2

## EVERY WEEK, EVERY LESSON

During your course, teachers continually assess your progress and suggest areas for improvement. Every week your teacher will design a range of clear learning outcomes, linked to the Common European Framework Reference for languages (CEFR).



# 3

## STUDENT HOUR

You can meet with our Director of Studies in Student Hour to talk about:

- Your progress
- Your learning goals
- Your study plan and course options
- How to apply for jobs or university



# 4

## ONE-TO-ONE PROGRESS TUTORIAL

Every four weeks you will have a one-to-one progress tutorial with your teacher. You will talk about your achievements, your strengths and weaknesses and how to progress to the next level. Teachers will help you to reflect on and assess your own progress, to help you become an independent and confident learner.



# 5

## YOUR NEW ENGLISH

You will receive a certificate at the end of your course, which confirms the new English level you have reached.



**We offer a wide choice of courses, and you can start any Monday on all General English courses.**

<b>GENERAL ENGLISH</b>	Focus on your confidence and fluency in spoken English and improve your English skills while developing your knowledge of grammar, vocabulary and pronunciation. Our teachers will inspire you to achieve the best you can in the time you have available. Maximum 15 per class, average 12. We have Beginner, Elementary, Pre-Intermediate, Intermediate, Upper-Intermediate and Advanced levels.
<b>30+ ADULT ENGLISH</b>	Study in an adult environment with other mature students. You will be able to design a syllabus with your teacher and group to create a more personalised course. Maximum 12 per class, average 9. B1 level or higher. We have Intermediate, Upper-Intermediate and Advance levels.
<b>CAMBRIDGE EXAM PREPARATION</b>	Closed group courses structured to ensure success! You will follow a Cambridge approved and designed syllabus. There are set start dates for these courses throughout the year. Maximum 12 per class, average 9.
<b>IELTS EXAM PREPARATION</b>	A course to help you achieve the score you need! Our teachers are very well experienced in motivating students and will guide you through the exam process. Maximum 12 per class, average 9.
<b>VIP ENGLISH</b>	The perfect course for those who wish to improve their General English and have specific language needs. You will gain confidence and improve your English skills while developing your knowledge of grammar, vocabulary and pronunciation. This course is combined with private lessons where teachers will create an individualised programme based on students' wants, needs and interests.
<b>30+ VIP ENGLISH</b>	A tailored course for the more mature learner. You will be able to design a syllabus with your teacher and group to create a more personalised course. This course is combined with tailor made courses to suit students' particular needs. The teachers will create an individualised programme based on students' wants, needs and interests.
<b>ENGLISH PLUS MODULES</b>	The English Plus modules are group classes combined with our General English courses. They consist of 5 lessons per week and cover a variety of specific language practice. Maximum 15 per class, average 12.
<b>ONE TO ONE LESSONS</b>	This is the fastest and most flexible way to learn English. Our one-to-one lessons ensure your learning time is 100% dedicated to you. You can choose your own timetable so you really can fit your learning around your lifestyle.
<b>CHRISTMAS AND NEW YEAR</b>	The perfect gift for friends, family – or for yourself! Improve your language skills during the morning and join in with London's magical festivities during the afternoon.
<b>FOUR SEASON EXPLORER (BESPOKE GROUP)</b>	Group programmes are very flexible and can be offered as closed programmes or as an open programme. Likewise, timetables, dates and course content are all designed to fit the groups needs and requirements.

# WEEKLY TIMETABLE

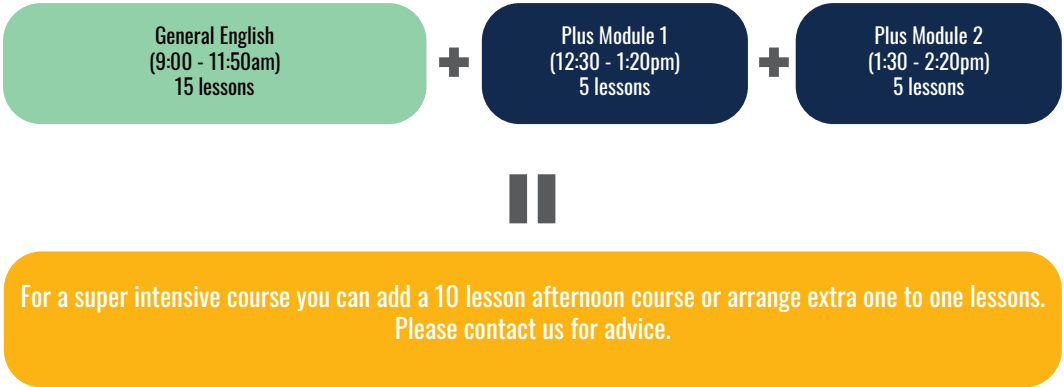


09:00 AM	10:00 AM	11:00 AM	12:00 PM	01:00 PM	02:00 PM	03:00 PM	04:00 PM	5:00PM+	
15 lessons (9:00 - 11:50am)				5 lessons (1:30 - 2:20pm)	10 lessons (2:30 - 4:10pm)			Every Mon & Wed (7:00 - 9:00pm)  *For more details, please refers to the website	
20 lessons (9:00 - 12:40pm)									
30 lessons (9am - 4:10pm)									
			PLUS MODULE 1 5 lessons (12:30 - 1:20pm)	PLUS MODULE 2 5 lessons (1:30 - 2:20pm)					
				15 lessons (1:30 - 4:10pm)					
				20 lessons (12:30 - 4:10pm)					
				20 lessons (12:30 - 4:10pm)					
One-to-one Lesson can be booked at a time that suits you.									

## KEY

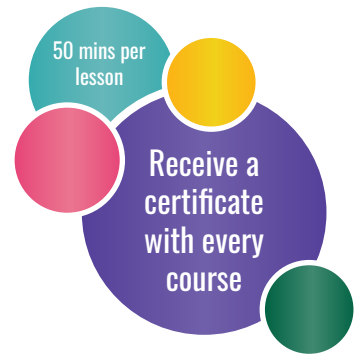
- General English
- 30+ Adult English
- IELTS Exam Preparation
- Cambridge Exam Preparation
- Summer Cambridge Exam Preparation
- Evening Class
- One-to-one Lesson
- Plus Modules 1 & 2

An example of how you can design a 25 lesson study week at Tti:





Courses for adults (ages 16+) throughout the year.  
You can take one course or combine courses to create your own programme



## WHY CHOOSE OUR GENERAL ENGLISH?

- Develop your knowledge of grammar, vocabulary and pronunciation.
- Practise the 4 key language skills of reading, writing, listening and speaking through interactive classroom activities, local cultural outings and guided self-study.
- Flexibility – You can choose a part time or full time course with a flexible timetable – you can study all day or just in the morning or afternoon and create the perfect balance between learning and free time.
- Our teachers will inspire you to achieve the very best you can in the time you have available.
- Maximum 15 students per class, average 10.

## WHY CHOOSE OUR 30+ ADULT ENGLISH?

- A tailor-made programme just for you. Our enthusiastic, qualified teachers will create your course through a negotiated syllabus for a more personalised programme.
- Maximum 12 students per class, average 9.
- Weekly class trips to London's museums, parks and other places of interest with your teacher.
- Regular speakers with Q&A sessions for authentic speaker interaction. Guests have included museum curators, journalists, actors and entrepreneurs.

LESSONS PER WEEK	DESCRIPTION
General English 10 (8.4 hours)	With only 10 lessons per week, this course provides the most flexibility to fit around your other commitments, whether that's your work, your family, or simply exploring London's famous culture.
General English 15 (12.5 hours)	With 15 lessons per week, this course provides the class time to develop your language skills, plus the freedom to develop new friendships and discover London's famous culture for yourself.
General English 20 (16.7 hours)	Our most popular course, offering you the perfect balance between learning and free time. So as well as developing your English language skills including grammar, vocabulary, communicating and pronunciation, you can enjoy the freedom to develop new friendships and discover London's famous culture.
General English 25 (20.8 hours)	This course gives you lots of class time to develop your skills quickly. Plus a couple of hours free each day for self-study, socialising or to go out and discover your new home city.
General English 30 (25 hours)	Our Intensive English courses are perfect for students who want to study hard and make rapid progress. This course is a great choice if your time in the UK is limited and you want to make the most of it.
General English 35 (29.2 hours)	This full-time course offers more class time than any other. But, like all our courses, we make sure your learning experience is rich, varied and above all enjoyable.



# IELTS EXAM PREPARATION

IELTS, the 'International English Language Testing System', is the key to travel, study and work in English speaking countries. IELTS is accepted by more than 10,000 organisations worldwide, including higher education institutions, professional associations, and private employers. This highly focused course is the perfect preparation for your IELTS exam. You must have an Intermediate level of English and pass our IELTS pre-test before being accepted onto the course.

## WHY CHOOSE OUR IELTS PREPARATION COURSE?



- Flexibility – You can start your course any Monday
- Small classes – Maximum of 12 students, average 9
- Real Exam Practice – At TopUp Learning London (Tti) you will sit regular tests and full mock exams during the course
- Tutorials – You will have one-to-one tutorials with your teachers to monitor your progress
- You can combine your IELTS course with 15 morning General English lessons to intensify your chosen programme

## STUDENT TESTIMONIALS

### SILVIA LOCATELLI - ITALY

"Taking the course for the preparation of my IELTS exam was the best idea in order to achieve a high score! Competent teachers encouraged me to work on my weaknesses and at the same time provided important tips to achieve higher scores in other sections of the test."

"In addition, weekly mock exams significantly helped me to concentrate for a long time and immediate corrections helped me to gradually decrease the number of my mistakes."

# CAMBRIDGE EXAM PREPARATION

The new Cambridge B2 First, and Cambridge C1 Advanced qualifications will open the door to businesses, educational institutions and government departments around the world. They are widely recognised as proof of outstanding English language skills and can also be used for your university applications in the UK.

## WHY CHOOSE OUR CAMBRIDGE B2 FIRST & C1 ADVANCED COURSES?



- Small classes – Maximum of 12 students, average 9 in closed groups
- Flexibility – Choose an intensive 8-week course or a shorter summer programme
- Qualified experienced teachers who will motivate you to realise your examination goals
- Real exam practice – At TopUp Learning London (Tti) you will sit regular tests and full mock exams during your course
- Included in the course price – a course book, access to online Cambridge exams through our e-learning system, one to one tutorials with your teachers to monitor your progress and social programme activities to practise your communication skills further
- Achieve the exam success needed for international careers and study

The perfect course for those who wish to improve their general English and specific language needs. Students will have a chance to develop and improve their English skills of reading, writing, speaking, listening, grammar, vocabulary and pronunciation combined with tailor made courses to suit their particular needs. The teachers will create an individualised programme based on students' wants, needs and interests.

## WHY CHOOSE OUR VIP ENGLISH COURSE?

### Students will:

- Gain increased confidence in their General English skills
- Be able to gain skills in their specialised area of expertise
- Decide on topics and pace that suits their individual needs
- Receive productive, tailor made and rewarding lessons to suit their individual needs

25 lessons  
per week



5 one-to-one lessons  
per week

Options for various  
English courses  
or  
Exam Preparation  
(IELTS / Cambridge)



Individualised lessons  
for  
Selected Topics



## ONE TO ONE LESSONS

This is the fastest and most flexible way to learn English. Our one-to-one lessons ensure your learning time is 100% dedicated to you. You can choose your own timetable so you really can fit your learning around your lifestyle. Each lesson lasts 60 minutes.

## SPECIALISED PROGRAMMES

Examples of courses that we can deliver include Medical English, Legal English, English for Finance and Banking and English for Oil Industry Professionals.

## FAMILY PROGRAMMES

We will create a personalised course tailored to the needs of each family member. Children aged 16 or under will study on a one-to-one basis.

HOURS	PRICE (FACE-TO-FACE LESSON)	PRICE (ONLINE LESSON)
per hour	£80	£70
4 hours	£304	£266
8 hours	£595	£520
12 hours	£864	£756
24 hours	£1,600	£1,400
48 hours	£2,743	£2,400



# ENGLISH PLUS MODULES

The English Plus modules are group classes combined with our General English courses. They consist of 5 lessons per week and cover a variety of specific language practice.

Applies to all students enrolled for minimum 20 lessons per week.



15 lessons of  
General English / IELTS



1 lesson of  
Plus Modules



## BRITISH CULTURE

In this module students will practise English Language skills in the context of British Culture. It covers a great range of topics, including: British history, politics, arts, music, humour, the monarchy, sports, employment, leisure activities, social customs and life in Britain in general.

Students will:

- Gain greater awareness of contemporary issues and culture in Britain
- Increase confidence in understanding, socialising and working with British people



## BUSINESS ENGLISH

This module is designed to help pre-experience and professional working students develop the practical English skills they need for the business world. Students will gain confidence in speaking and using the English needed for the workplace as well as having the opportunity to focus on some specific business skills such as participating in business meetings, giving presentations, negotiating and writing reports, e-mails and letters.

Students will:

- Gain greater awareness of the skills needed for the workplace
- Increase confidence in using English in a business environment



## CAMBRIDGE EXAM SKILLS\*

\*Students will be required to complete a pre-course test to assess their skill level

This module focus on Cambridge B2 and C1 qualifications which opens the door to thousands of global businesses, educational institutions and government departments around the world. It is widely recognised as a symbol of outstanding English language skills. And can also be used for your university or student visa applications in the UK and Australia.

Students will:

- Have the necessary exam skills, knowledge of all the papers, and the confidence to deliver their best under exam conditions
- Learn clear strategies to answer the different question types
- Be able to assess their progress and prepare for exam conditions, by taking part in regular tests and full mock exams
- Complement classroom learning with a personal e-study plan, homework assignments and regular tutorials

## TEACHER TRAINING\*

\*B2 English level required

A refresher module, designed for international teachers of English. The course will provide engaging and comprehensive overview of the key skills that English language teachers need to make their classroom a place where learning is both dynamic and well-informed. Aimed at teachers who want to add cutting edge techniques to existing experience.

Students will:

- Be equipped with the necessary skills to considerably develop their practice
- Gain greater awareness of current trends in ELT theory and practice



## ACADEMIC WRITING SKILLS

In this module students will have a chance to practise the skill of writing for academic purposes as well as various academic styles. They will also be exposed to writing in exam contexts and exam techniques.

Students will:

- Develop their writing skills
- Increase their ability to plan, organise and edit writing effectively
- Increase their ability in developing and supporting ideas for writing



## CONVERSATION

This module aims to increase students' ability to communicate in spoken English. This should include a focus on basic speaking skills such as turn-taking, agreeing/disagreeing and giving and responding to opinions. The focus is on building students' confidence, fluency and pronunciation when speaking.

Students will:

- Practise speaking for accuracy and fluency
- Increase their range of functional and (semi-) fixed expressions for speaking
- Heighten their awareness of individual sounds, stress and intonation patterns in English as well as some aspects of connected speech
- Enhance their ability to engage in and maintain conversation



## ART AND FASHION

This module is an ideal option for students who would like to learn specialist vocabulary in the field of Art and Fashion. It is designed to cater for those interested in these areas and for those who wish to study these subjects in the future at university or college.

Students will:

- Gain greater awareness of topic specific vocabulary
- Practise English skills in the context of Art and Fashion



# SOCIAL PROGRAMME

This is an example of the full programme of social activities which you will be given at the beginning of each month so that you can plan to enjoy your time here in London. There is so much to do in Camden every night of the week that you will never get bored. We have many activities here at the school and we often go and listen to live music or go to the theatre in the centre of town. Other times we go ice-skating, bowling, visit salsa bars, clubs or see a film just around the corner. Prices are advertised although some activities are free. Regents Park, Primrose Hill and London Zoo are wonderful outdoor spaces ten minutes walk from school and of course Camden Lock Market is on our doorstep. London also has lots of free museums and galleries as well as endless shopping opportunities!

## SAMPLE SOCIAL PROGRAMME

### TEACHER LED ACTIVITIES

MONDAY 1 <sup>ST</sup>	TUESDAY 2 <sup>ND</sup>	WEDNESDAY 3 <sup>RD</sup>	THURSDAY 4 <sup>TH</sup>
Welcome to London! Guided tour of Camden!  Meet in the Study Lounge @ 4.30pm	London Bridge to Embankment walk  Meet @ 4.30pm in the Study Lounge	Wimbledon On the Big Screen @ Regent's Canall  Meet @ 2.30pm Sign up @ Reception	Pub of the Month: <b>COVENT GARDEN</b> Visit your teacher's favourite pub of the area Over 18s ONLY Meet @ 5.30pm in SL Sign up @ Reception!
MONDAY 8 <sup>TH</sup>	TUESDAY 9 <sup>TH</sup>	WEDNESDAY 10 <sup>T</sup>	THURSDAY 11 <sup>T</sup>
Welcome to London! Guided tour of Camden!  Meet in the Study Lounge @ 4.30pm	Tti's Free Speaking Workshop!  Meet @ 4.30pm in the Study Lounge	Let's explore Bubble Tea in China Town!  Sign up @ reception Meet in the Study Lounge @ 4.30pm	Tti's Pub Crawl Meet @ 6pm outside Tti school. Over 18s ONLY  <b>ICE CREAM!</b> Meet in the Study Lounge @ 2.30pm Sign up @ Reception
MONDAY 15 <sup>T</sup>	TUESDAY 16 <sup>T</sup>	WEDNESDAY 17 <sup>T</sup>	THURSDAY 18 <sup>T</sup>
Welcome to London! Guided tour of Camden!  Meet in the Study Lounge @ 4.30pm	Primrose Hill Walk & Ice Cream  Meet in the Study Lounge @ 4.30pm Sign up @ Reception	The Natural History Museum  Meet @ 2.30pm in the Study Lounge Sign up @ Reception	Let's explore the world famous Borough Market!  Meet @ 2.30pm in the Study Lounge Sign up @ Reception
MONDAY 22 <sup>ND</sup>	TUESDAY 23 <sup>RD</sup>	WEDNESDAY 24 <sup>TH</sup>	THURSDAY 25 <sup>TH</sup>
Welcome to London! Guided tour of Camden!  Meet in the Study Lounge @ 4.30pm	London National Park week Pedalo Ride in Hyde Park  Meet @ 2.30pm in the Study Lounge Sign up @ Reception	Tti's Self-Study Workshop  Meet @ 4.30pm in the Study Lounge Sign up @ Reception	Tti's <b>SUMMER PARTY!!!</b> Let's dance the night away  At 7.30pm, £5 Buy tickets @ Reception Over 18s ONLY
MONDAY 29 <sup>TH</sup>	TUESDAY 30 <sup>TH</sup>	WEDNESDAY 31 <sup>S</sup>	THURSDAY 1 <sup>ST</sup>
Welcome to London! Guided tour of Camden!  Meet in the Study Lounge @ 4.30pm	Exhibition @ The Photographers' Gallery  At 2.30pm £2.50 entry with student card Sign up @ Reception!	Capital Loop Walk Highgate to Finsbury park  Meet @ 2.30pm in the Study Lounge Sign up @ Reception	Tti's Pub Quiz! £3 to play. Test your general knowledge & enjoy a pint.  At 4.30pm Sign up @ Reception!

### WEEKEND SUGGESTIONS

FRIDAY 5 <sup>TH</sup>	SATURDAY 6 <sup>TH</sup>	SUNDAY 7 <sup>TH</sup>
Party @ Fabric (11pm - 7am) £6 advance ticket - Over 19s ONLY  Tube: Farringdon Buy your tickets in Reception	LGBTQ+ London Pride!  Watch the parade and enjoy the festivities on Trafalgar Square	RHS Hampton Court Palace Flower Show  Take a stroll through Hampton Court Palace and enjoy the beautiful flowers!
FRIDAY 12 <sup>T</sup>	SATURDAY 13 <sup>T</sup>	SUNDAY 14 <sup>T</sup>
Camden Got Soul @ The Blues Kitchen  Live music free entry before 9pm, £5 after Over 18s ONLY	Interactive Exhibition: AI: More Than Human @ Barbican Centre  Tube: Barbican Entry £15	Watch the Wimbledon Final!  Flat Iron Square Screen Tube: Borough
FRIDAY 19 <sup>T</sup>	SATURDAY 20 <sup>TH</sup>	SUNDAY 21 <sup>S</sup>
Free Party @ TROPICANA 9pm - 2am Free entry & free shot before 11pm  Get your voucher @ Reception	See a bit of English countryside life @ Lambeth Country Show!  20 <sup>th</sup> - 21 <sup>st</sup> July @ Brockwell Park Train: Heme Hill - FREE	Let's explore the famous Portobello Road Market!  Take a walk through the colourful street and find some bargains! Tube: Notting Hill Gate
FRIDAY 26 <sup>T</sup>	SATURDAY 27 <sup>TH</sup>	SUNDAY 28 <sup>TH</sup>
Why not enjoy the evening sun at Fulham Beach Club Rooftop bar with beer pong alfresco dining & BBQ  Entry £5. Train: Wandsworth Town Over 18s ONLY	Check out the famous Maltby Street Market!  Enjoy delicious street food & apple in the railway arches Tube: London Bridge	Canal Boat Tour from Camden Market to Little Venice!  £9 only. Pay by card on the boat. Timetable online: London Waterbus Company
FRIDAY 2 <sup>ND</sup>	SATURDAY 3 <sup>RD</sup>	SUNDAY 4 <sup>TH</sup>
Find some bargains @ Brick Lane Vintage Market  Overground: Shoreditch High Street	Why not do the famous Bermondsey Beer Mile!  Sample London craft beer from micro-brewerles built into the railway arches. Start: South Bermondsey, Finish: London Bridge, 11am - 6pm	Enjoy the sunshine at the Underbelly Festival  Circus, street food, comedy and much more. Tube: Waterloo





# CHRISTMAS AND NEW YEAR COURSE

What better time to come to London? The perfect gift for friends, family or yourself!

London comes alive during the Christmas period with beautiful decorations Christmas markets, ice-rinks, Christmas concerts and a fantastic atmosphere throughout the city. With our Christmas course you can improve your English skills while enjoying the festivities. We organise a special Christmas social programme after classes so that you can make the most of everything that is going on in London at this magical time of the year.



- Visit a Christmas market
- Enjoy a Christmas pub lunch
- Visit the world famous Harrods, Liberty's and Fortnum & Mason
- Must do in London at Christmas
- Explore Winter Wonderland in Hyde Park
- See the Christmas Tree in Trafalgar Square and the lights on Oxford Street

## WHAT THE STUDENTS HAVE TO SAY

### DANIELA D'ALESSIO - ITALY

"I really enjoyed the Christmas Course. It was perfect and if I can come back again next year then I will!"



### HELICIO MARIO BRUNELLI JUNIOR - BRAZIL

"Christmas is a great time to be in London. This is my second time at Tti at this time of the year. It's a great opportunity to meet people from around the world and improve my English at the same

# FOUR SEASON EXPLORER (BESPOKE GROUP)



Life may have been on pause recently, but that doesn't mean you can't start dreaming of exploring Great Britain's beautiful countryside, wandering sandy shores and discovering historic landmarks once more.

The UK's traditional pubs, stately homes and glorious gardens are reopening, ready to give you a warm British welcome once again. In the meantime, you can still delve into heritage, revel in culture, indulge in English conversation and dig into foodie delights from afar. Enquire today for Tti's Four Season Explorer Package and it's all you need to imagine a true taste of Britain.

At Tti we have considerable experience in managing and successfully delivering specialist group courses. These tailored and competitively-priced programmes can cover a broad range of English language and teacher training requirements.

Group programmes are very flexible and can be offered as closed programmes or as an open programme. Likewise, timetables, dates and course content are all designed to fit the groups needs and requirements.

## WHY CHOOSE OUR GROUP PROGRAMME?



- Wide range of course options available
- Choice of residential, studio, or homestay accommodation
- Bespoke daily activity programme
- Mix with different nationalities
- Receive an end of course certificate
- Our school in Camden is perfectly placed for your group to discover and explore a vibrant new culture



EXPLORER PACKAGES	DURATION	START DATE	END DATE
Autumn Explorer 2020	1 - 3 weeks	26th October	27th November
Winter Explorer 2020	1 - 6 weeks	7th December	26th February
Spring Explorer 2021	1 - 3 weeks	1st March	30th April
Summer Explorer 2021	1 - 6 weeks	7th June	27th August
Autumn Explorer 2021	1 - 3 weeks	25th October	26th November
Winter Explorer 2021	1 - 6 weeks	3rd December	25th February
NB: Minimum age is 16 Minimum group size is 6.			







## COST OF LIVING IN LONDON

A rough guide to the cost of living in London.

DESCRIPTION	AVERAGE PRICE
 Average weekly rent per person in zone 2-4	£140 - £250
 Food, basic laundry and toiletry items for 1 person per week	£40 - £60
 Pub meal	£10 - £20
 Restaurant meal	£15 - £30
 Pint of beer	£4.00 - £5.50
 Weekly Zone 2-3 Travelcard	£27
 Cinema ticket	£12 - £17
 Nightclub	£12 - £30
 English dictionary or grammar book	£10 - £20
 West End Theatre	£25+
 Haircut	£10 - £40

## WHERE TO VISIT

### Museums and galleries:

- Tate Modern
- Tate Britain
- V & A
- Natural History Museum
- Science Museum

### Markets:

- Portobello Market
- Borough Market
- Columbia Road Flower Market
- Brixton Market
- Camden Market





# WHERE TO STAY IN LONDON

**We offer a wide range of accommodation options for you.**

\*We use reputable accommodation providers to assist with the provision of accommodation for our students.





# WHERE TO STAY IN LONDON



## HOMESTAY FAMILY

All our host families have been carefully selected to meet British Council requirements. We do our best to match you with just the right family to make your stay in London a happy one!

Staying with a host family is ideal for you if you wish to have English speaker interaction each evening and to learn more about British culture and lifestyles.

Homestay supplement:

- Additional £40/week for private bathroom facilities

ROOM TYPE	PRICE (PER PAX / PER WEEK)
Bed & breakfast	£205
Half-board*	£245
Walking distance bed & breakfast#	£245
Walking distance half-board*#	£310
Twin half-board*	£200
Twin bed & breakfast	£165
* bed, breakfast and evening meal # within walking distance of school	



AVAILABLE	BOARD BASIS	MIN. AGE	MIN. BOOKING	CHECK IN	CHECK OUT	FACILITIES	GUEST POLICY	CANCELLATION POLICY	TRAVEL ZONE
Year round	Bed & Breakfast	16	1 week	Sunday before 9pm	Saturday before 11am	Bed linen, towel, free wifi on request	None permitted	2 weeks notice.  If after arrival, 2 weeks payment plus accommodation booking fee	All



## YEAR-ROUND STUDENT RESIDENCE



This university hall of residence offers single rooms with private bathrooms grouped in flats reserved for TopUp Learning London (Tti) students, with a shared kitchen. It is a clean and comfortable living space for students. It is located on Holloway Road, a pleasant area with good local facilities such as shops, cafes and bars. The school is just 15 minutes away by bus or 30 minutes on foot.

ROOM TYPE	PRICE (PER PAX / PER WEEK)
Single – Self-catering private bathroom#	£310
# within walking distance of school	

AVAILABLE	BOARD BASIS	MIN. AGE	MIN. BOOKING	CHECK IN	CHECK OUT	FACILITIES	GUEST POLICY	CANCELLATION	TRAVEL ZONE
Year round	Self-catering	18	1 week	Sunday from 2pm	Saturday at 9am	Bed linen, private bathroom, cabled broadband in room, wi & TV in communal areas, laundrette, 24hr	Arrange with school	2 weeks notice If after arrival, 2 weeks payment plus accommodation	2

## SUMMER STUDENT RESIDENCE



This university hall of residence offers single rooms with a shared kitchen and private bathroom. It is a clean and comfortable living space for students. Located between Kings Cross and Islington, it is just 15 minutes from the school by bus or a 30 minute walk away. The residence has a friendly atmosphere and a courtyard where you can sit outside.

ROOM TYPE	PRICE (PER PAX / PER WEEK)
Single – Self-catering private bathroom#	£320
# within walking distance of school	

AVAILABLE	BOARD BASIS	MIN. AGE	MIN. BOOKING	CHECK IN	CHECK OUT	FACILITIES	GUEST POLICY	CANCELLATION	TRAVEL ZONE
July & August	Self-catering	18	1 week	Sunday from 2pm	Saturday before 10am	Bed linen, wash basin in room, cabled broadband in room, wi-fi and TV in communal areas, 24hr laundrette and reception, CCTV	No guests	2 weeks notice. If after arrival, 2 weeks payment plus accommodation booking fee	1

# WHERE TO STAY IN LONDON

## PREMIUM RESIDENCE (FEBRUARY - SEPTEMBER)

Located in the residential area of Tufnell Park, this premium university hall of residence offers single ensuite rooms grouped in flats reserved for TopUp Learning London (Tti) students. Students have access to an on site gym (an induction is necessary before using the gym), games room, lounge areas with Sky TV and dedicated study spaces. There is also a coin operated launderette. The school is just 10 minutes away by Tube or 30 minutes on foot.

ROOM TYPE	PRICE (PER PAX / PER WEEK)
Single – Self-catering private bathroom#	£345
# within walking distance of school	



AVAILABLE	BOARD BASIS	MIN. AGE	MIN. BOOKING	CHECK IN	CHECK OUT	FACILITIES	GUEST POLICY	CANCELLATION POLICY	TRAVEL ZONE
Year round	Self- catering	18	1 week	Sunday from 2pm	Saturday at 9am	Ensuite shower, toilet and wash basin, large desk, ample storage, timer- controlled heating, free wi-fi, bed linen, shared kitchen, kitchen utensils, on-site gym, games room, lounge areas with Sky TV and study spaces, coin-operated launderette, 24hr reception, secure door entry, CCTV	Arrange with school	In the case of full or partial cancellation before arrival, two weeks' notice must be given.  If accommodation is cancelled after arrival, two weeks' payment will be taken plus the accommodation booking fee.	2





## SELF CONTAINED STUDIO

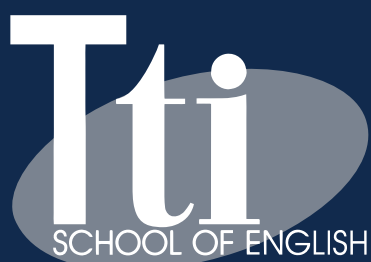
Our studio accommodation is located on a quiet residential road in trendy Kentish Town close to shops, cafes and a busy high street and within easy walking distance of Camden Market and the school. The spacious studios offer modern and brightly furnished accommodation with private bathroom and kitchenette facilities. Enjoy independent living and making friends in London.

ROOM TYPE	PRICE (PER PAX / PER WEEK)
Single studio – ensuite bathroom#	£380
# within walking distance of school	

AVAILABLE	BOARD BASIS	MIN. AGE	MIN. BOOKING	CHECK IN	CHECK OUT	FACILITIES	GUEST POLICY	CANCELLATION	TRAVEL ZONE
Year round	Self- catering	18	2 weeks	Sunday after 3pm	Saturday at 10am	Ensuite bathroom, bed linen, towels, private kitchenette, free broadband, secure site with CCTV, social events, secure door entry, on-site management, bike storage and common room	Arrange with school	If cancelled with less than 2 weeks' notice, 2 weeks' payment.  If after arrival, 4 weeks' payment plus accommodation booking fee	2







148 Camden High Street,  
London

 +44 (0) 20 7419 2300

 [info@ttischool.com](mailto:info@ttischool.com)

 [www.ttischool.com](http://www.ttischool.com)